



Drawing Register

CD00 Site Plan

Kayak Store Site Plan

Reference Image

CD01 Plans and Elevations

Kayak Store Floor Plan

Kayak Store Roof Plan

E1 North Elevation

E2 East Elevation

E3 South Elevation

E4 West Elevation

Schedule - Seagrass Panels and Copper Pressings

CD02 Sections

A Section - Longitudinal

B Section - Seagrass Panels

C Section - StormWater

CD03 Seagrass Panel Tender Package

D01 Typical Panel to Panel Detail (plan)

D02 Typical Panel to Stormwater Detail (plan)

D03 Typical Panel Corner Detail (plan)

D04 Panel to Structure Detail

D05 Wall to Roof Detail (section)

D06 Gutter to DownPipe Detail (section)

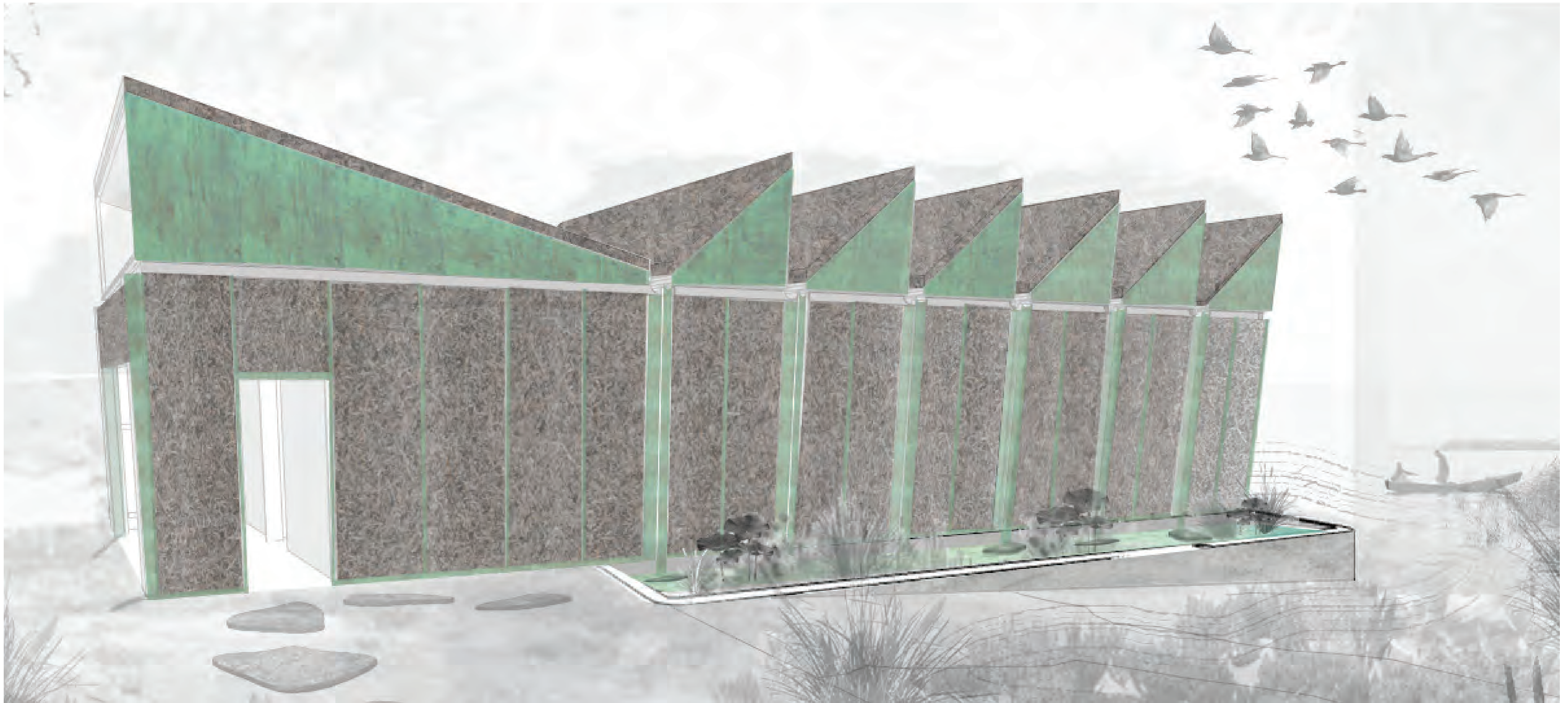
D07.1 BoxGutter Detail (section)

D07.2 Sawroof Head Detail (section)

D08 Conc. Wall to Downpipe Detail (section)

D09 Constructed Wetland Wall Detail (section)

D10 Panel Fixing Detail (section)



2 REFERENCE IMAGE
NTS

Identification removed

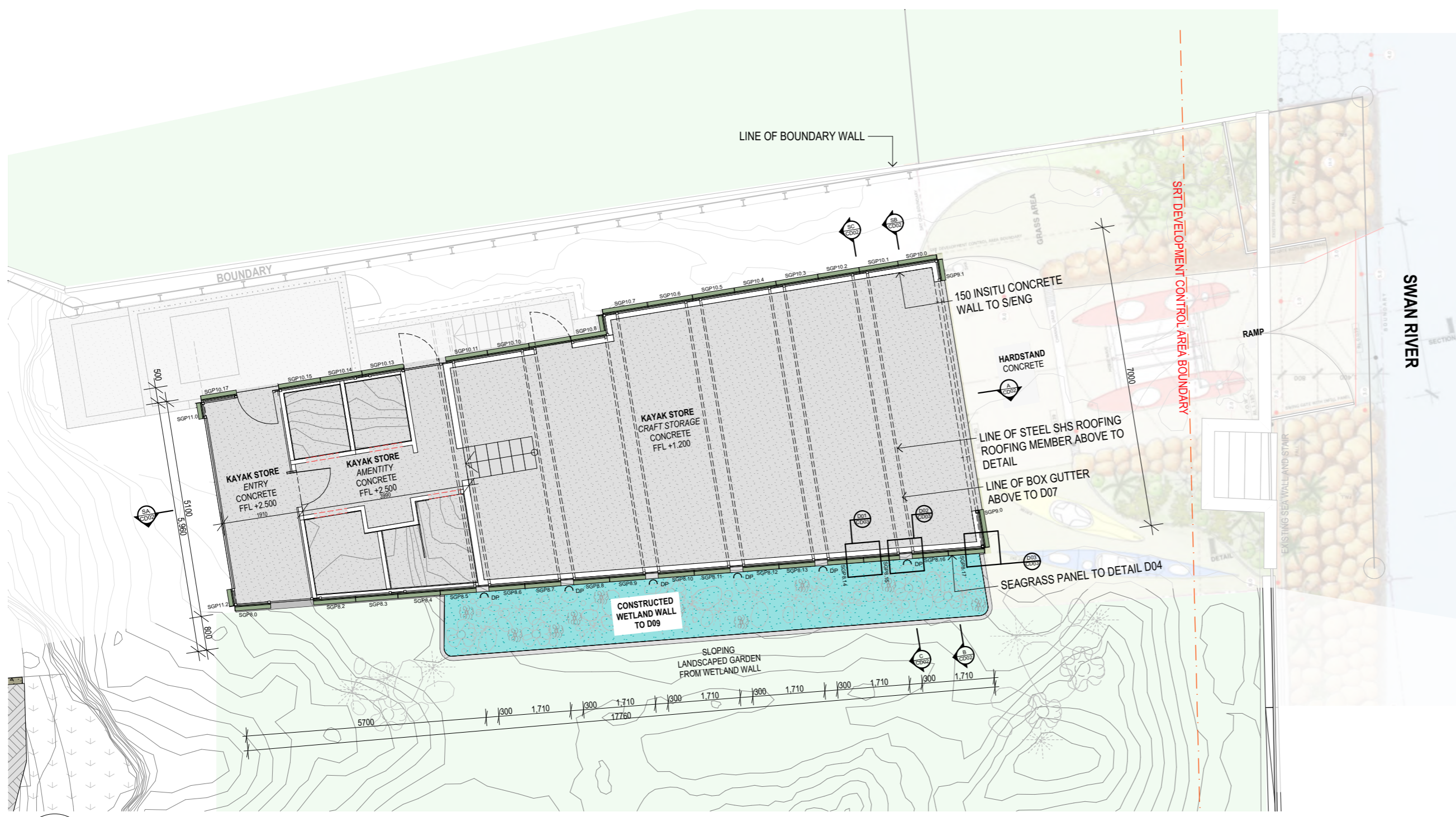
Reproduction of the whole or part of this document constitutes an infringement of copyright. The information, ideas and concepts contained in this document are confidential. The recipients of this document shall be prohibited from disclosing such information, ideas and concepts to any person without prior written consent of the copyright holder.



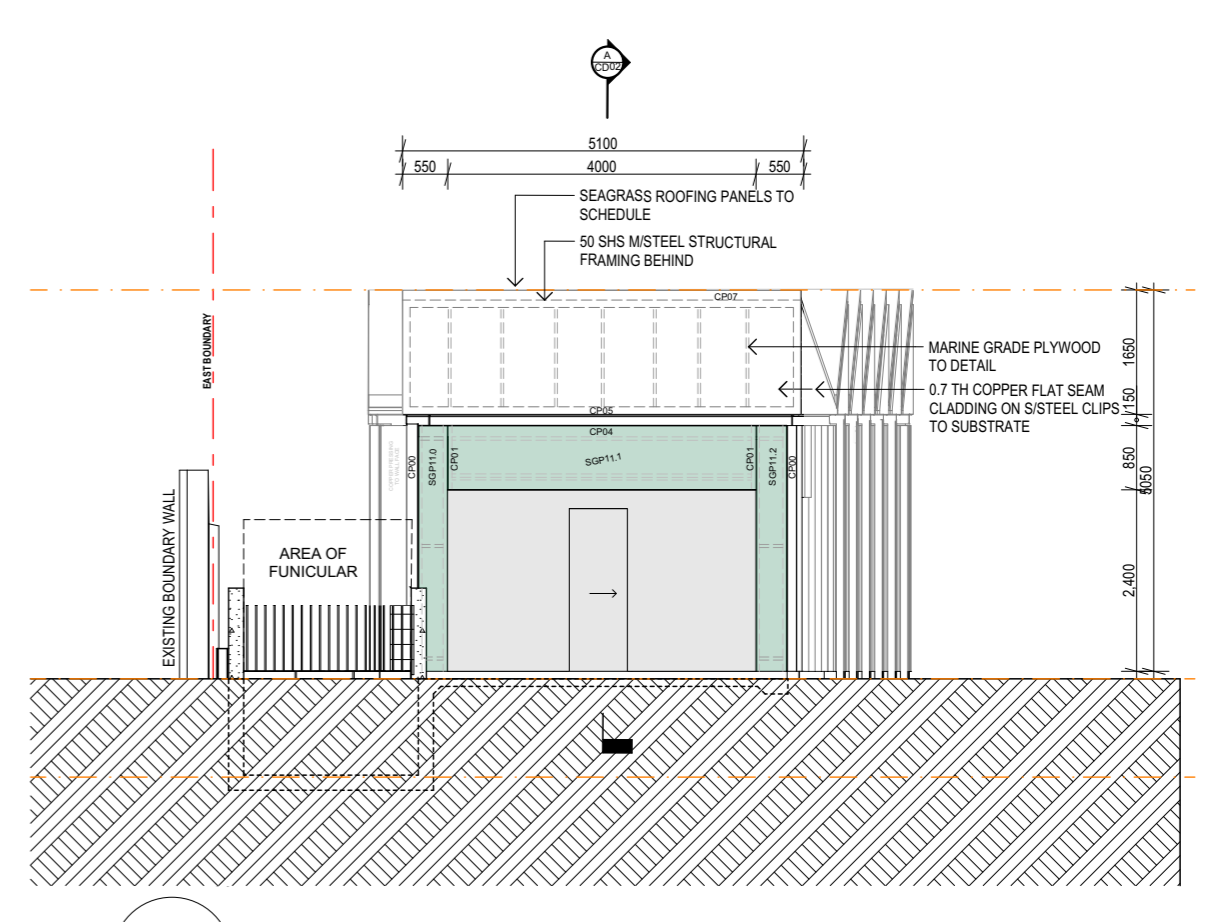
| date | no. | description | by |
|-----------|-----|------------------------------------|----|
| 28/09/23 | B | ISSUED FOR NOMINATED SUBCONTRACTOR | LE |
| 30/06/23 | A | ISSUED FOR TENDER PURPOSE | LE |
| REVISIONS | | | |

| | |
|---------------|-------------------------------|
| JOB | SEAGRASS PANEL TENDER PACKAGE |
| ADDRESS | undisclosed |
| DWG | Site Plan |
| SCALE | |
| DRAWN | LE |
| CHECKED | SB |
| COMMENCED | July 2023 |
| DATE PRINTED: | 28/09/2023 |
| FILE NAME: | Kayak Store |

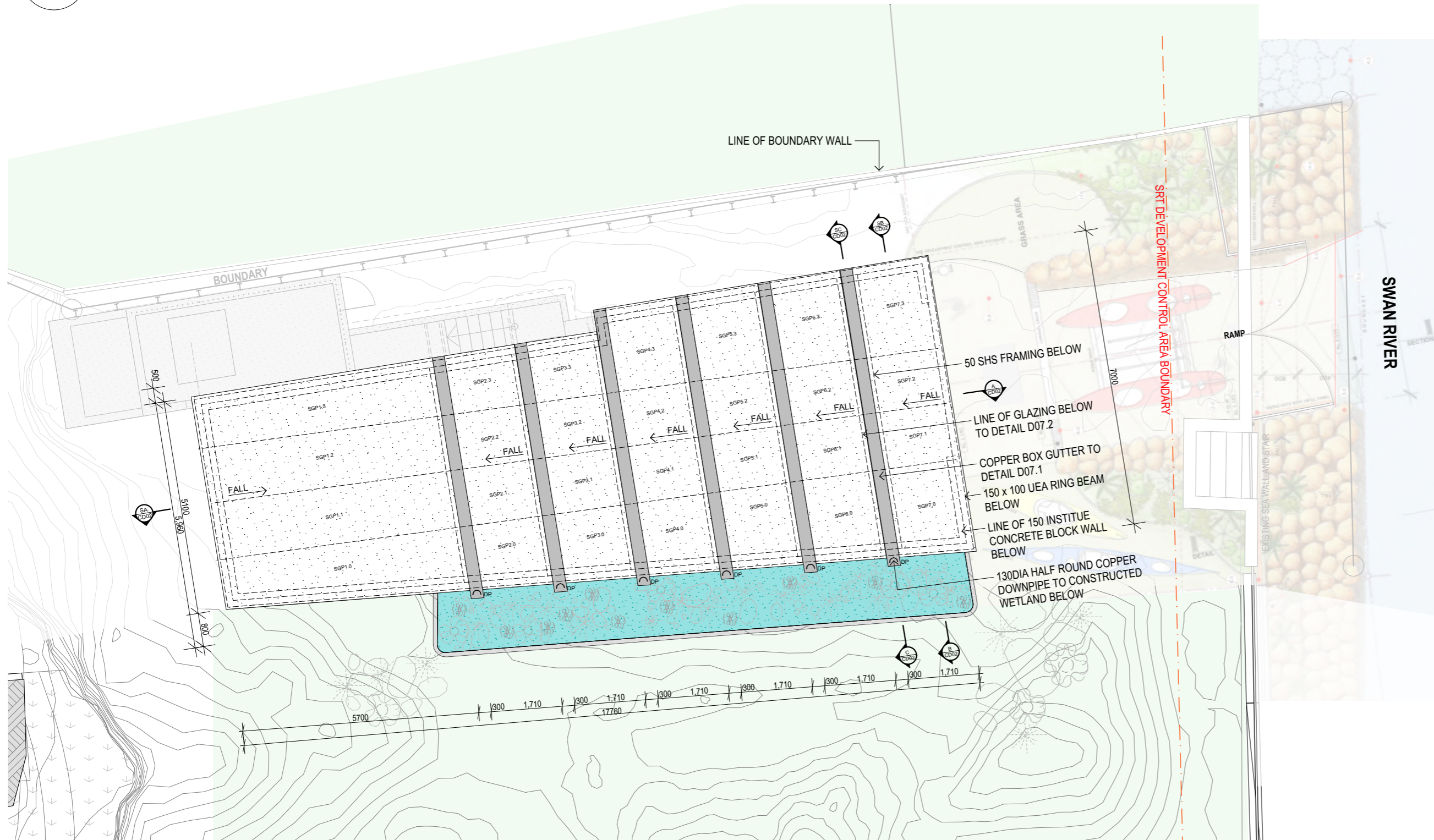
| |
|-------|
| CD00 |
| REV.B |



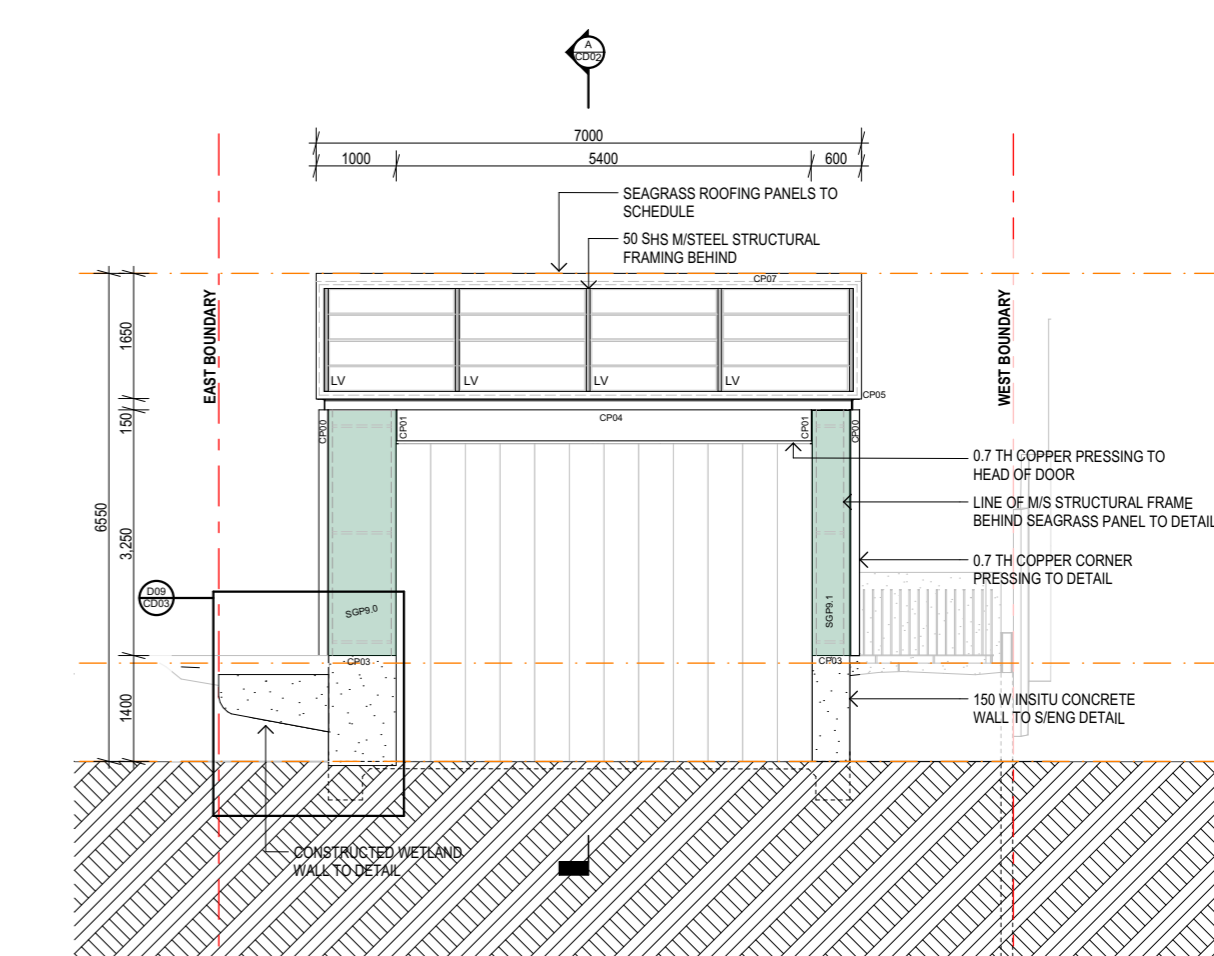
1 FLOOR PLAN
SCALE 1:100



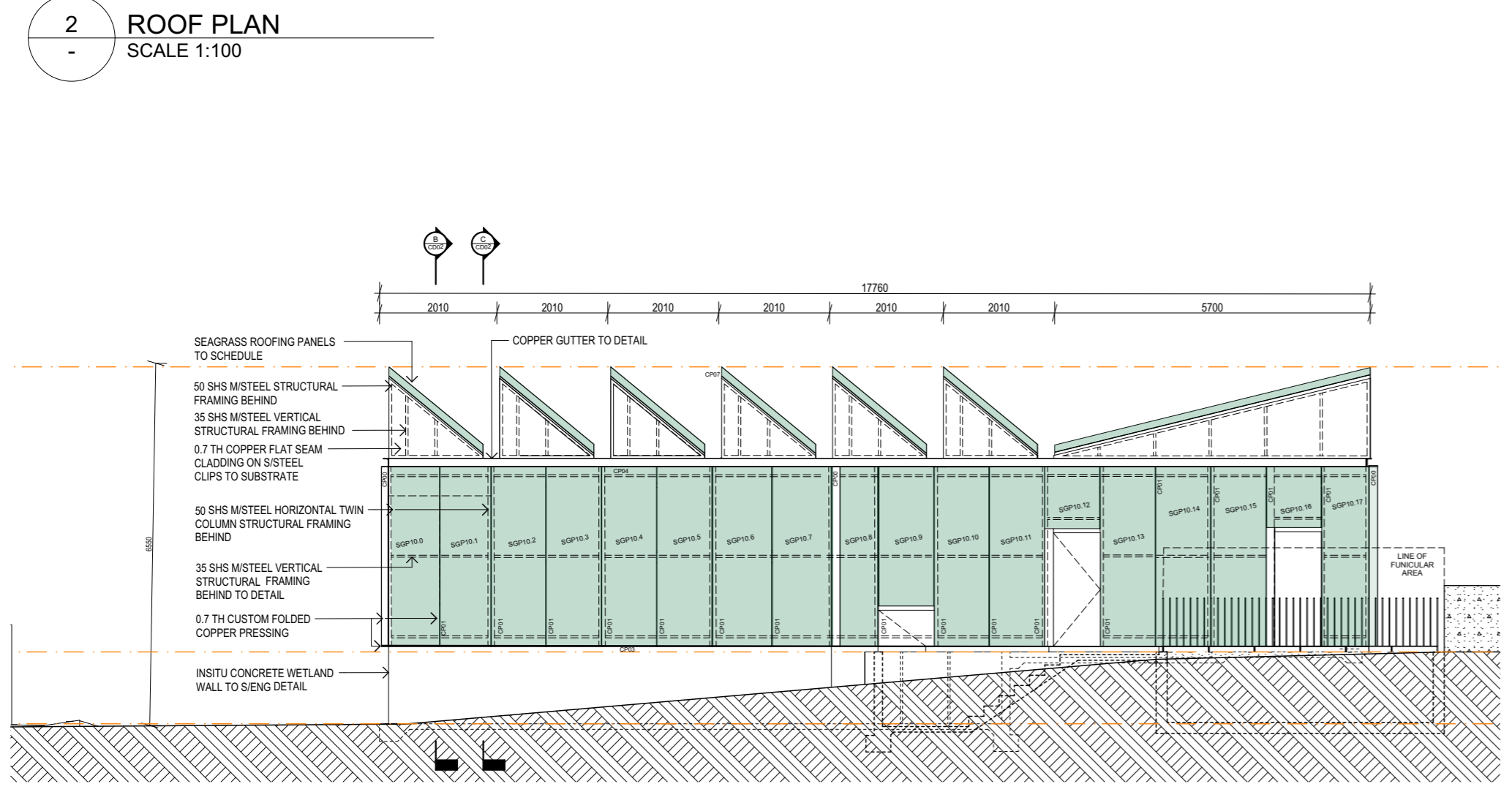
3 NORTH ELEVATION
SCALE 1:100



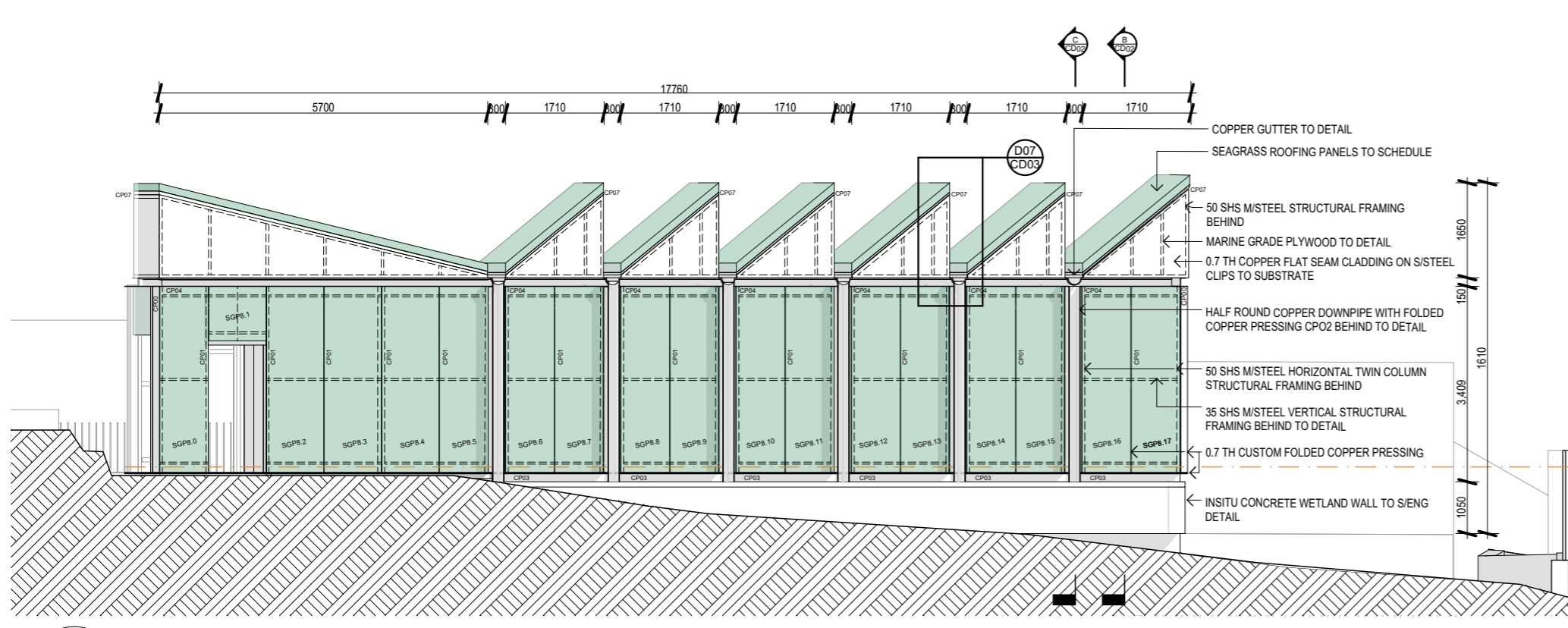
2 ROOF PLAN
SCALE 1:100



4 SOUTH ELEVATION
SCALE 1:100



5 EAST ELEVATION
SCALE 1:100



6 WEST ELEVATION
SCALE 1:100

Seagrass Panel and Copper Pressing Schedule

| LOCATION | NO. | SIZE (quadrilateral) (length x width) | TRIMMING (copper to detail) | NOTES | |
|------------|------------|--|--|---|--|
| SAWROOF 1 | SGP1.0 | 5700 x 1540 x 1200 | CP01 to all joining roof panels to detail D01. | slanted panel to specified M/S structural framing angle | |
| | SGP1.1 | 5700 x 1370 | | | |
| | SGP1.2 | 5700 x 1370 | | | |
| SAWROOF 2 | SGP1.3 | 5700 x 1540 x 1200 | | copper mesh, compressed seagrass and seagrass bioresin board to spec. | |
| | SGP2.0 | 1710 x 1660 x 1560 | | | |
| | SGP2.1 | 1710 x 1370 | | | |
| SAWROOF 3 | SGP2.2 | 1710 x 1370 | | CP05, CP06, CP07 copper pressing to flash all glazing, gutter stormwater connection and sawroof head around roof panels to detail | |
| | SGP2.3 | 1710 x 1470 x 1420 | | | |
| | SGP3.0 | 1710 x 1770 x 1670 | | | |
| SAWROOF 4 | SGP3.1 | 1710 x 1370 | | | |
| | SGP3.2 | 1710 x 1370 | | | |
| | SGP3.3 | 1710 x 1500 x 1470 | | | |
| SAWROOF 5 | SGP4.0 | 1710 x 1890 x 1790 | | | |
| | SGP4.1 | 1710 x 1370 | | | |
| | SGP4.2 | 1710 x 1370 | | | |
| SAWROOF 6 | SGP4.3 | 1710 x 2090 x 2030 | | | |
| | SGP5.0 | 1710 x 2010 x 1910 | | | |
| | SGP5.1 | 1710 x 1370 | | | |
| SAWROOF 7 | SGP5.2 | 1710 x 1370 | | | |
| | SGP5.3 | 1710 x 2130 x 1090 | | | |
| | SGP6.0 | 1710 x 2120 x 2020 | | | |
| SAWROOF 8 | SGP6.1 | 1710 x 1370 | | | |
| | SGP6.2 | 1710 x 1370 | | | |
| | SGP6.3 | 1710 x 2190 x 2130 | | | |
| SAWROOF 9 | SGP7.0 | 1710 x 2250 x 2140 | | | |
| | SGP7.1 | 1710 x 1370 | | | |
| | SGP7.2 | 1710 x 1370 | | | |
| SAWROOF 10 | SGP7.3 | 1710 x 2250 x 2190 | | | |
| | SGP8.0 | 3250 x 840 | CP00, CP01 | | vertical panels to specified M/S structural framing members. |
| | SGP8.1 | 950 x 990 | CP01 | | |
| SGP8.2 | 3250 x 990 | CP01 | | | |
| WEST WALL | SGP8.3 | 3250 x 990 | CP01 | copper mesh, compressed seagrass and seagrass bioresin board to spec. | |
| | SGP8.4 | 3250 x 850 | CP01, CP02 | | |
| | SGP8.5 | 3250 x 850 | CP01, CP02 | | |
| | SGP8.6 | 3250 x 850 | CP01, CP02 | | |
| | SGP8.7 | 3250 x 850 | CP01, CP02 | | |
| | SGP8.8 | 3250 x 850 | CP01, CP02 | | |
| | SGP8.9 | 3250 x 850 | CP01, CP02 | | |
| | SGP8.10 | 3250 x 850 | CP01, CP02 | | |
| | SGP8.11 | 3250 x 850 | CP01, CP02 | | |
| | SGP8.12 | 3250 x 850 | CP01, CP02 | | |
| | SGP8.13 | 3250 x 850 | CP01, CP02 | | |
| | SGP8.14 | 3250 x 850 | CP01, CP02 | | |
| | SGP8.15 | 3250 x 850 | CP01, CP02 | | |
| | SGP8.16 | 3250 x 850 | CP01, CP02 | | |
| | SGP8.17 | 3250 x 850 | CP01, CP02 | | |
| SOUTH WALL | SGP9.0 | 3250 x 900 | CP00, CP01 | CP03, CP04 copper pressing to flash top and bottom of all panels to detail | |
| | SGP9.1 | 3250 x 500 | CP01, CP00 | | |
| | SGP10.0 | 3250 x 920 | CP00, CP01 | | |
| | SGP10.1 | 3250 x 990 | CP01 | | |
| | SGP10.2 | 3250 x 990 | CP01 | | |
| | SGP10.3 | 3250 x 990 | CP01 | | |
| | SGP10.4 | 3250 x 990 | CP01 | | |
| | SGP10.5 | 3250 x 990 | CP01 | | |
| EAST WALL | SGP10.6 | 3250 x 1060 | CP01 | | |
| | SGP10.7 | 3250 x 1060 | CP01, CP00 | | |
| | SGP10.8 | 3250 x 700 | CP01 | | |
| | SGP10.9 | 2500 x 990 | CP01 | | |
| | SGP10.10 | 3250 x 990 | CP01 | | |
| | SGP10.11 | 3250 x 990 | CP01 | | |
| | SGP10.12 | 1120 x 990 | CP01 | | |
| | SGP10.13 | 3250 x 990 | CP01 | | |
| | SGP10.14 | 3250 x 990 | CP01 | | |
| | SGP10.15 | 3250 x 990 | CP01 | | |
| | SGP10.16 | 1100 x 990 | CP01 | | |
| | SGP10.17 | 3250 x 850 | CP01, CP00 | | |
| NORTH WALL | SGP11.0 | 3250 x 380 | CP00, CP01 | | |
| | SGP11.1 | 850 x 4070 | CP01, CP02 | | |
| | SGP11.2 | 3250 x 380 | CP01, CP02 | | |

Identification removed

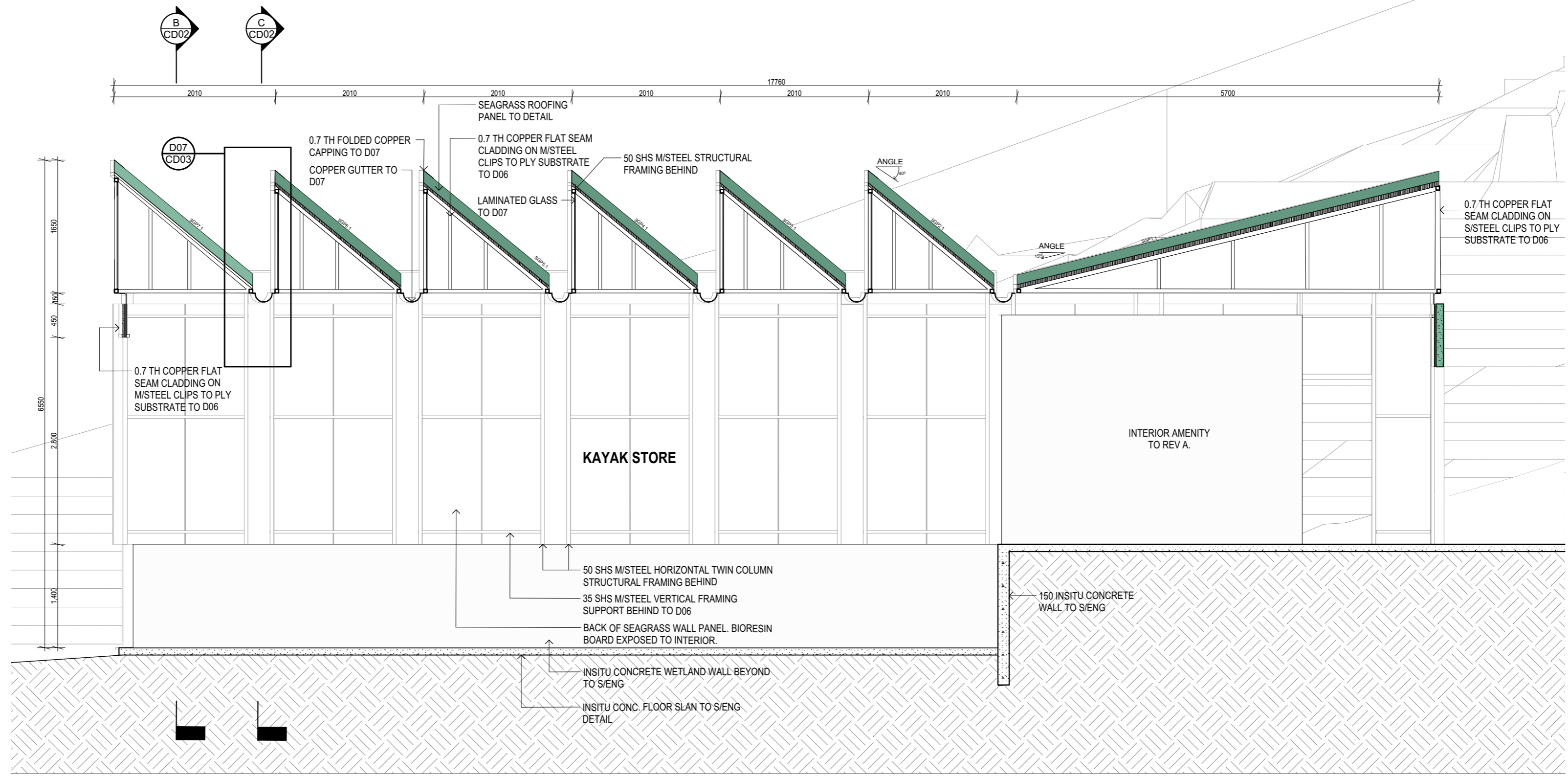
LEGEND
 DP - COPPER DOWNPIPE TO DETAIL
 LV - GLASS LOWER BLADES TO SPEC.

Reproduction of the whole or part of this document constitutes an infringement of copyright. The information, ideas and concepts contained in this document are confidential. The recipients of this document shall not disclose or disseminate such information, ideas and concepts to any person without your prior consent of the copyright holder.

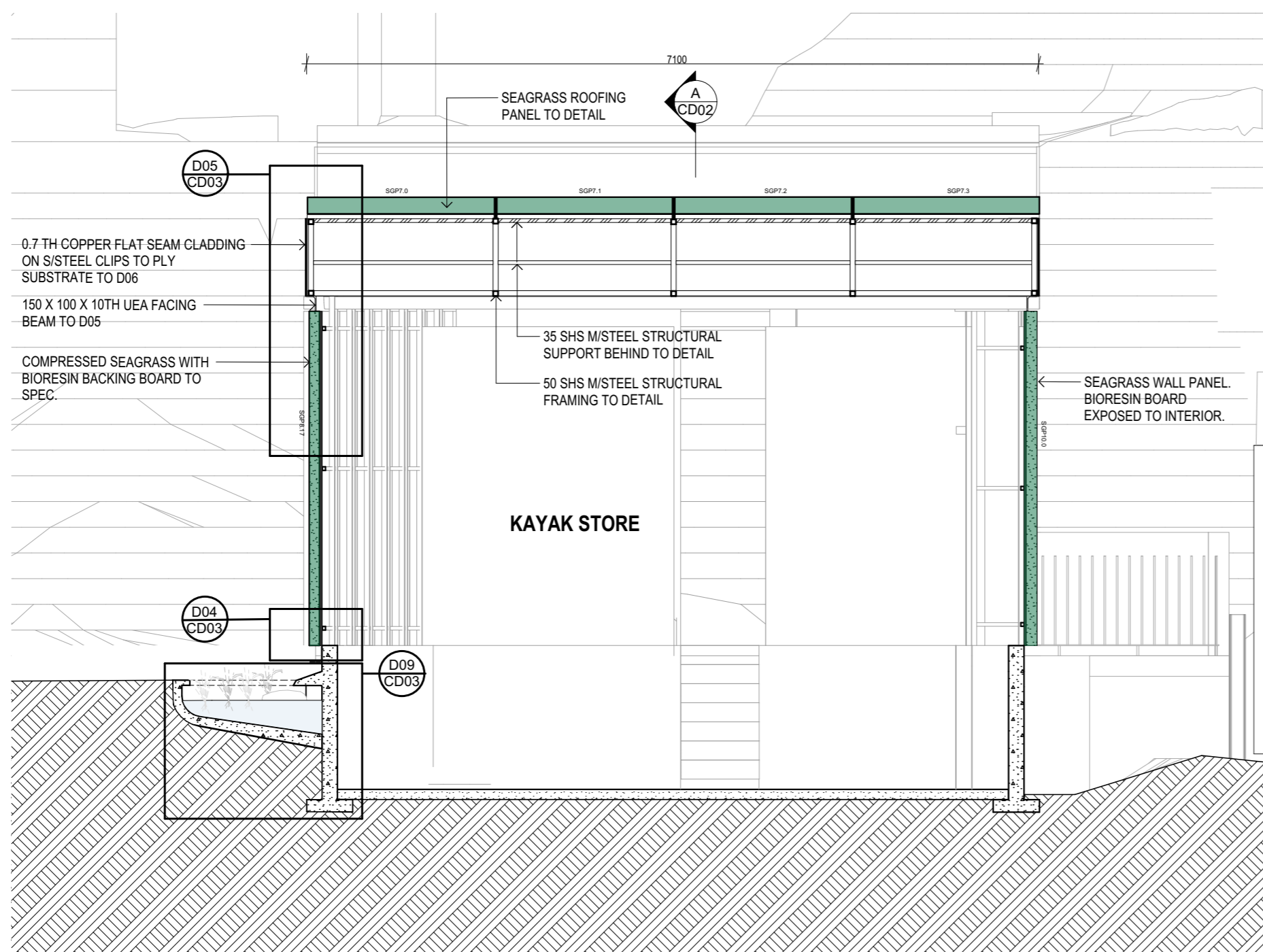
| no. | description |
|----------|--------------------------------------|
| 28/09/23 | B ISSUED FOR NOMINATED SUBCONTRACTOR |
| 30/06/23 | A ISSUED FOR TENDER PURPOSE |
| date: | no. description |

JOB: SEAGRASS PANEL TENDER PACKAGE
 ADDRESS: undisclosed
 DWG: Plans and Elevations
 SCALE: DRAWN: LE SB CHECKED: COMMENCED: July 2023
 as shown LE SB July 2023
 DATE PRINTED: 28/09/2023 FILE NAME: Kayak Store

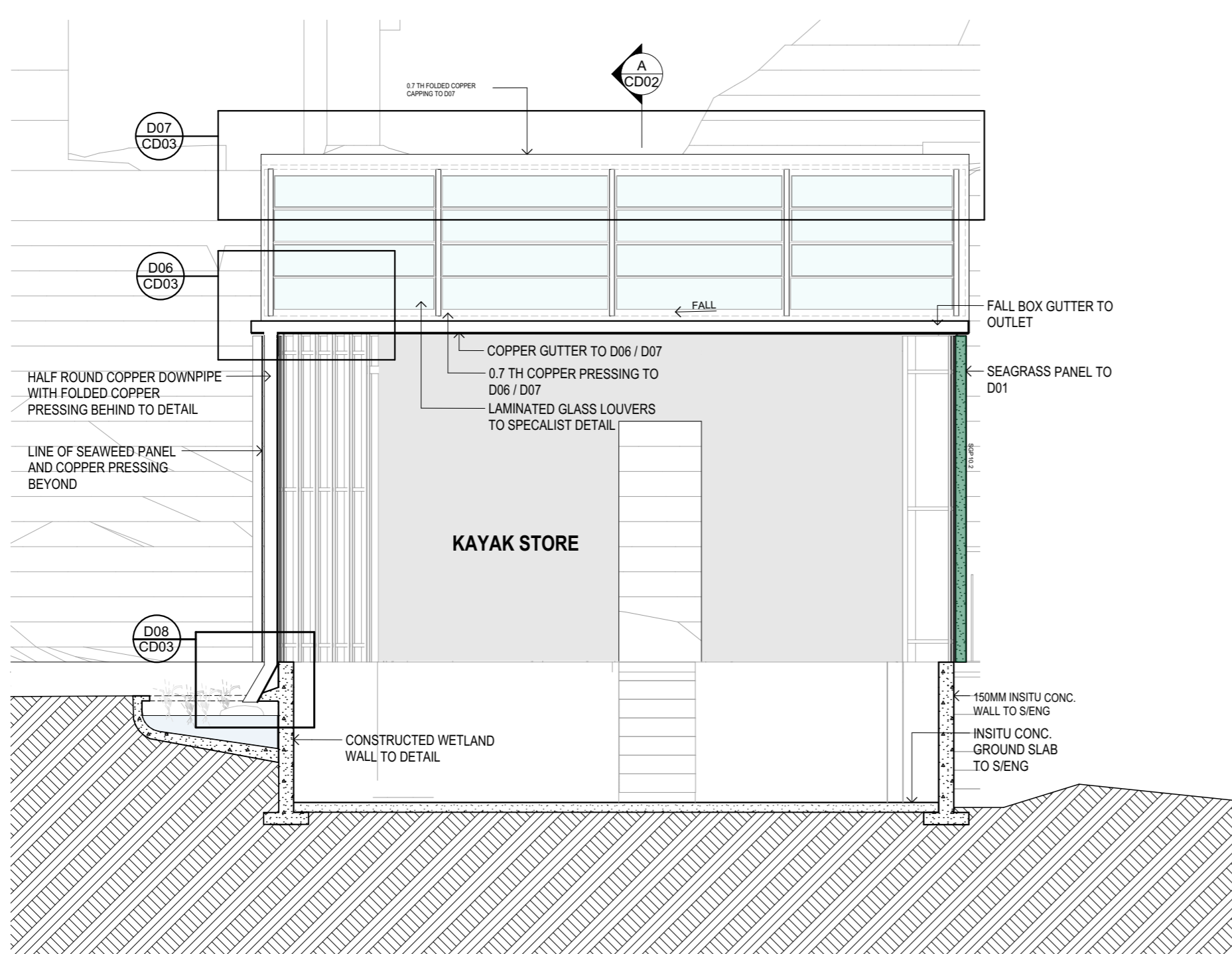
CD01
REV.B



A LONGITUDINAL SECTION
SCALE 1:50



B SEAGRASS PANEL SECTION
SCALE 1:50



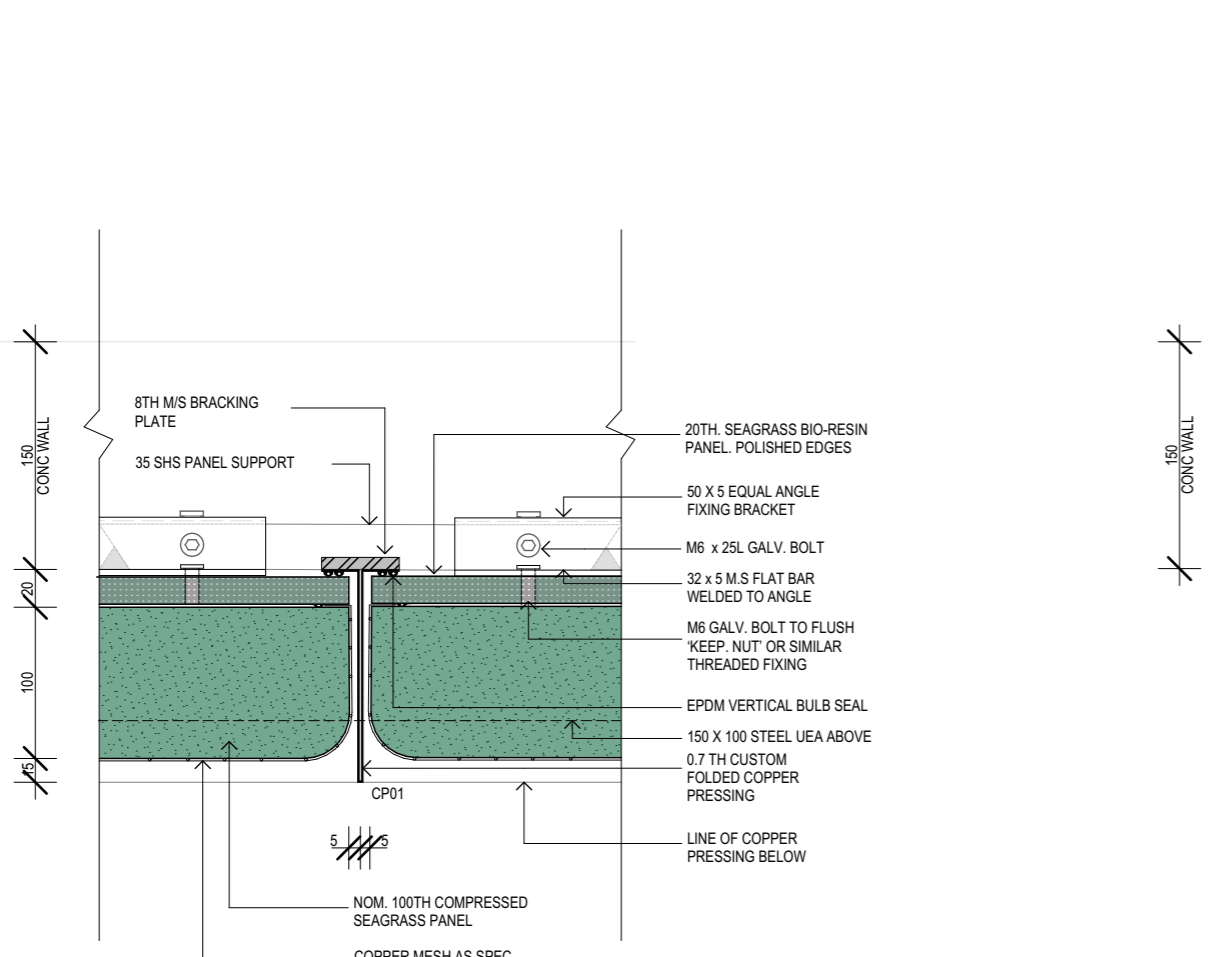
C STORMWATER SERVICES SECTION
SCALE 1:50

Identification removed

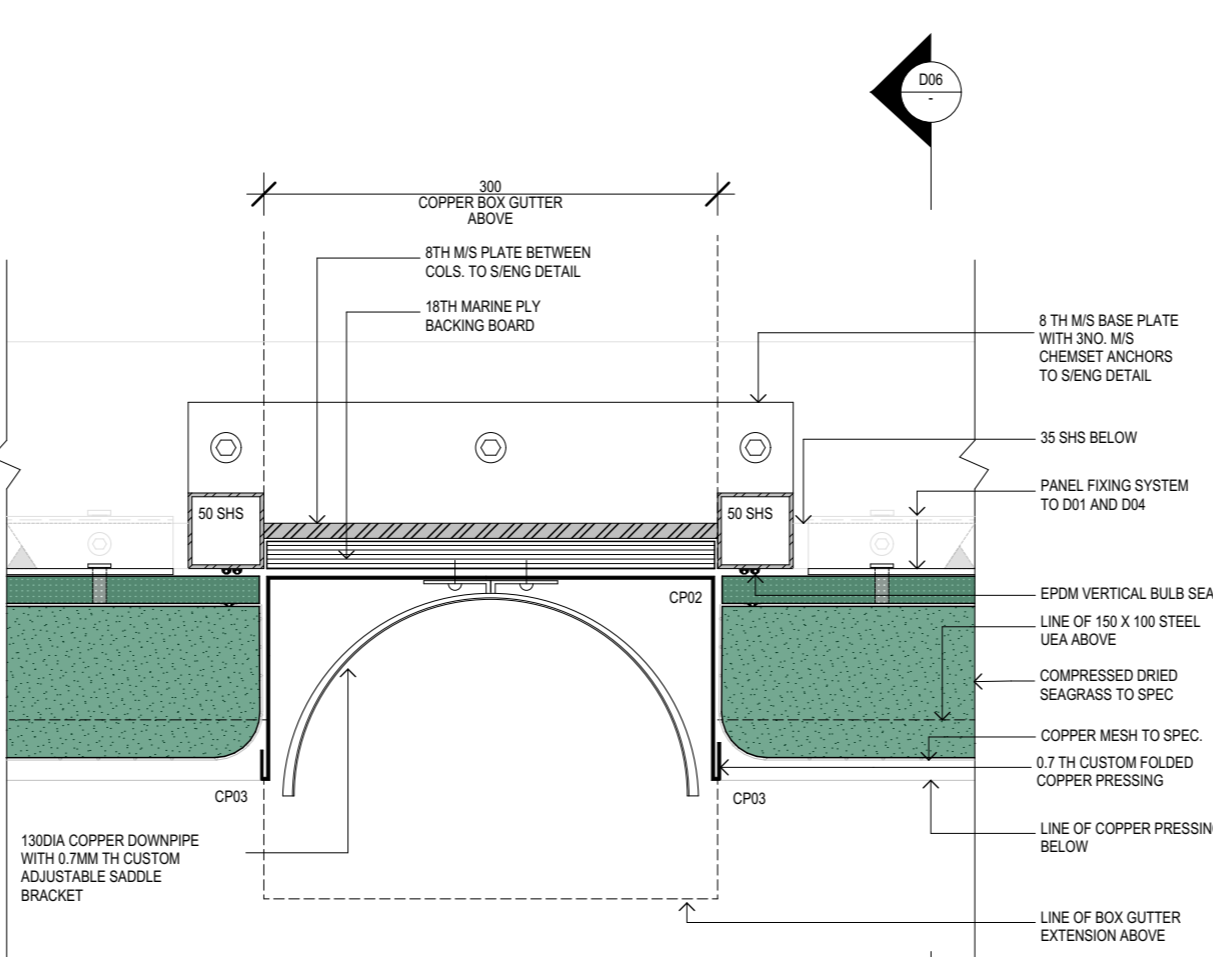
Reproduction of the whole or part of this document constitutes an infringement of copyright. The information, ideas and concepts contained in this document are confidential. The recipients of this document shall be prohibited from disclosing such information, ideas and concepts to any person without prior written consent of the copyright holder.

| | | | |
|---------------|------------|------------------------------------|-----------|
| JOB | | SEAGRASS PANEL TENDER PACKAGE | |
| ADDRESS | | undisclosed | |
| DWG | | Sections | |
| SCALE | DRAWN | CHECKED | COMMENCED |
| as shown | LE | SB | July 2023 |
| DATE PRINTED: | FILE NAME: | REV B | |
| 28/09/23 | 30/06/23 | KAYAK STORE | |
| date: | no. | description | by |
| 28/09/23 | B | ISSUED FOR NOMINATED SUBCONTRACTOR | LE |
| 30/06/23 | A | ISSUED FOR TENDER PURPOSE | LE |

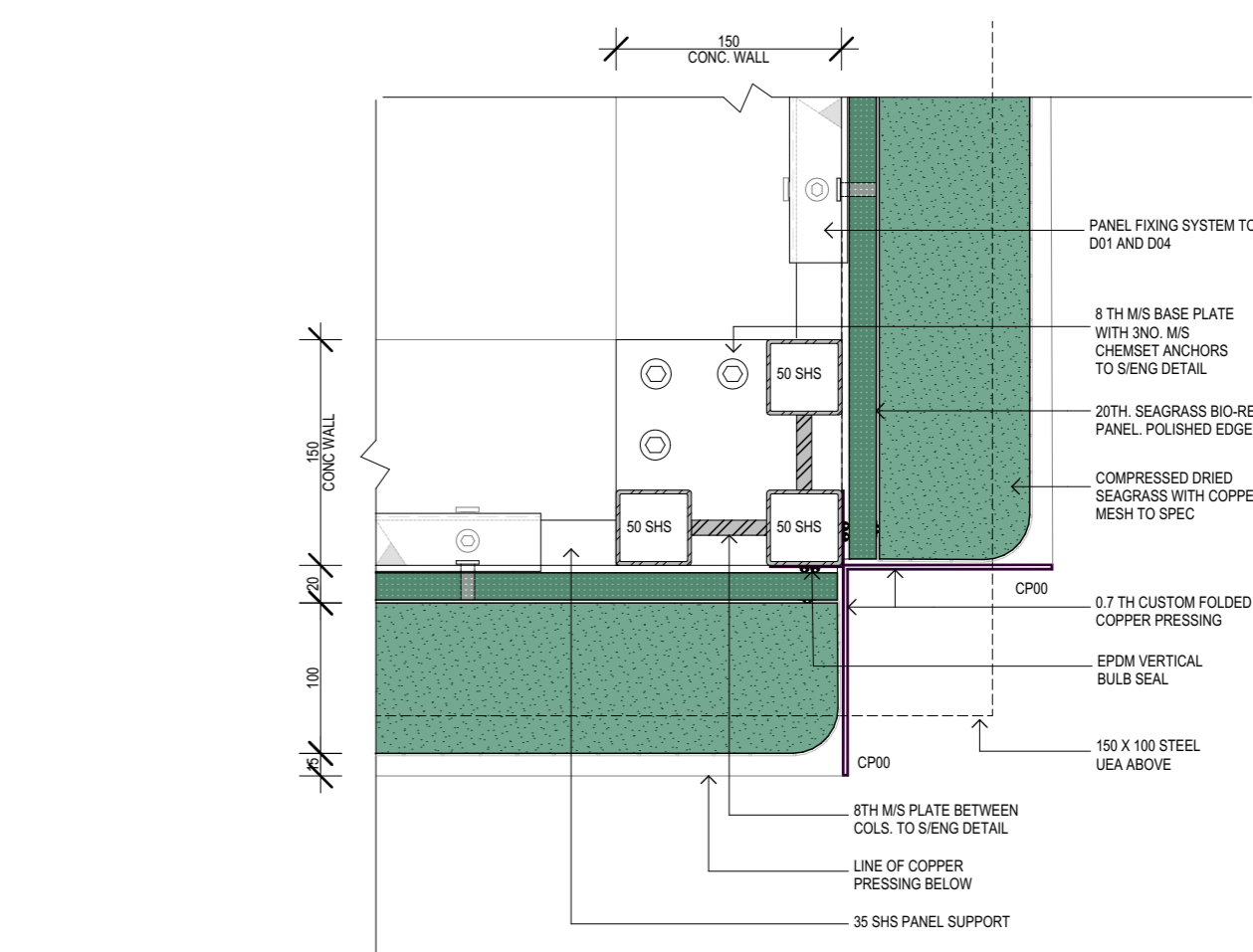
CD02



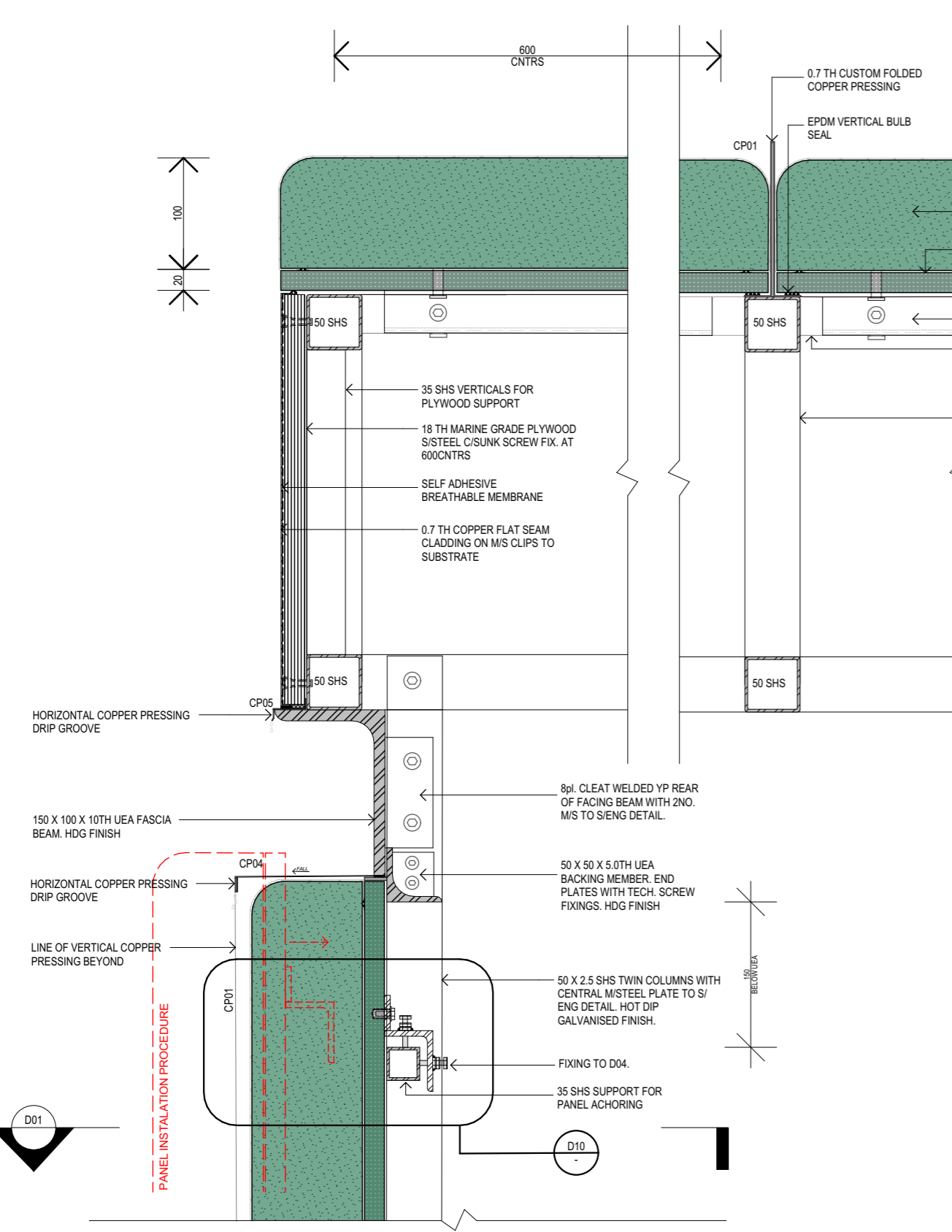
D01 PANEL TO PANEL PLAN
CD01 SCALE 1:5



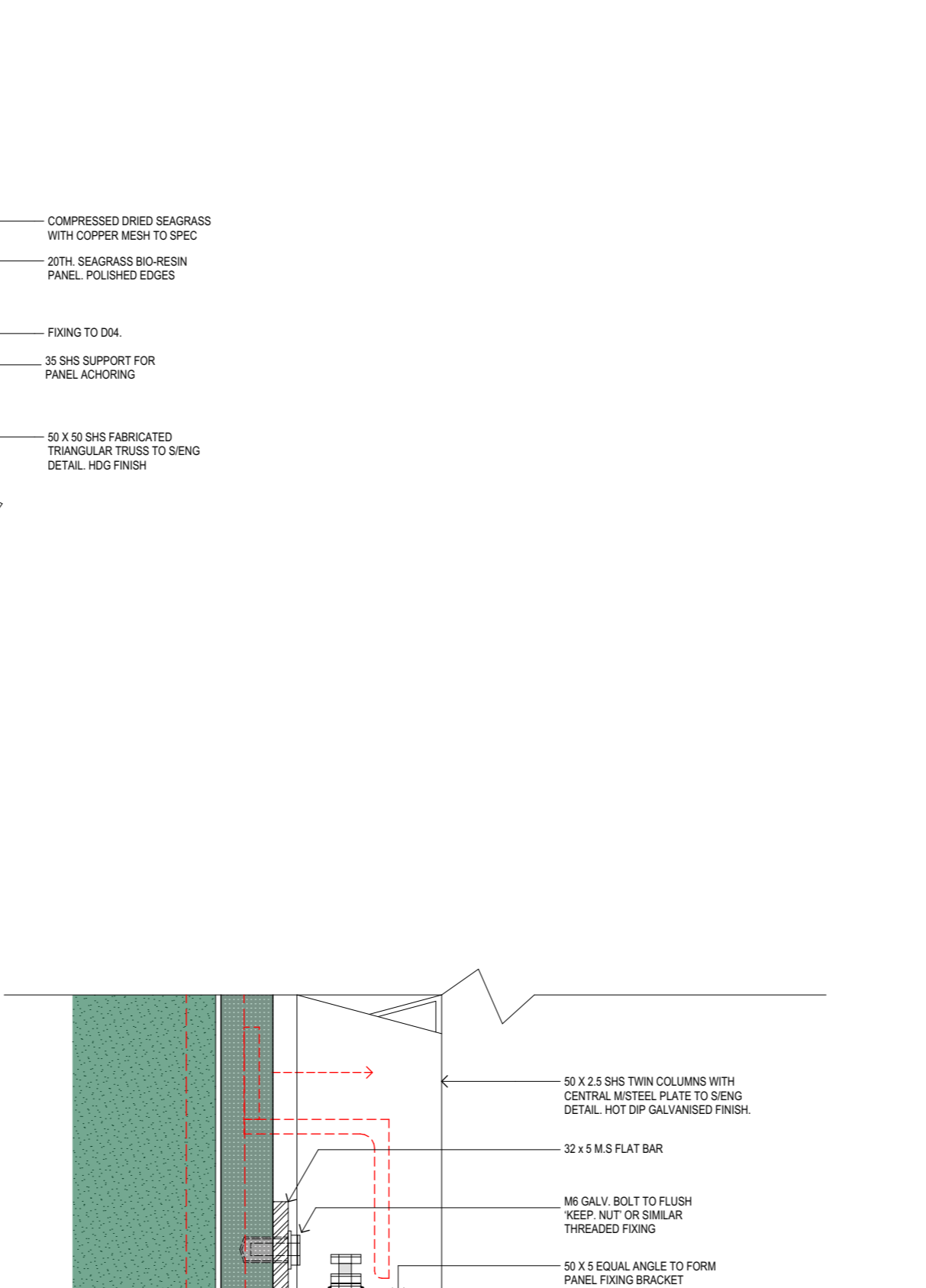
D02 PANEL TO STORMWATER PLAN
CD01 SCALE 1:5



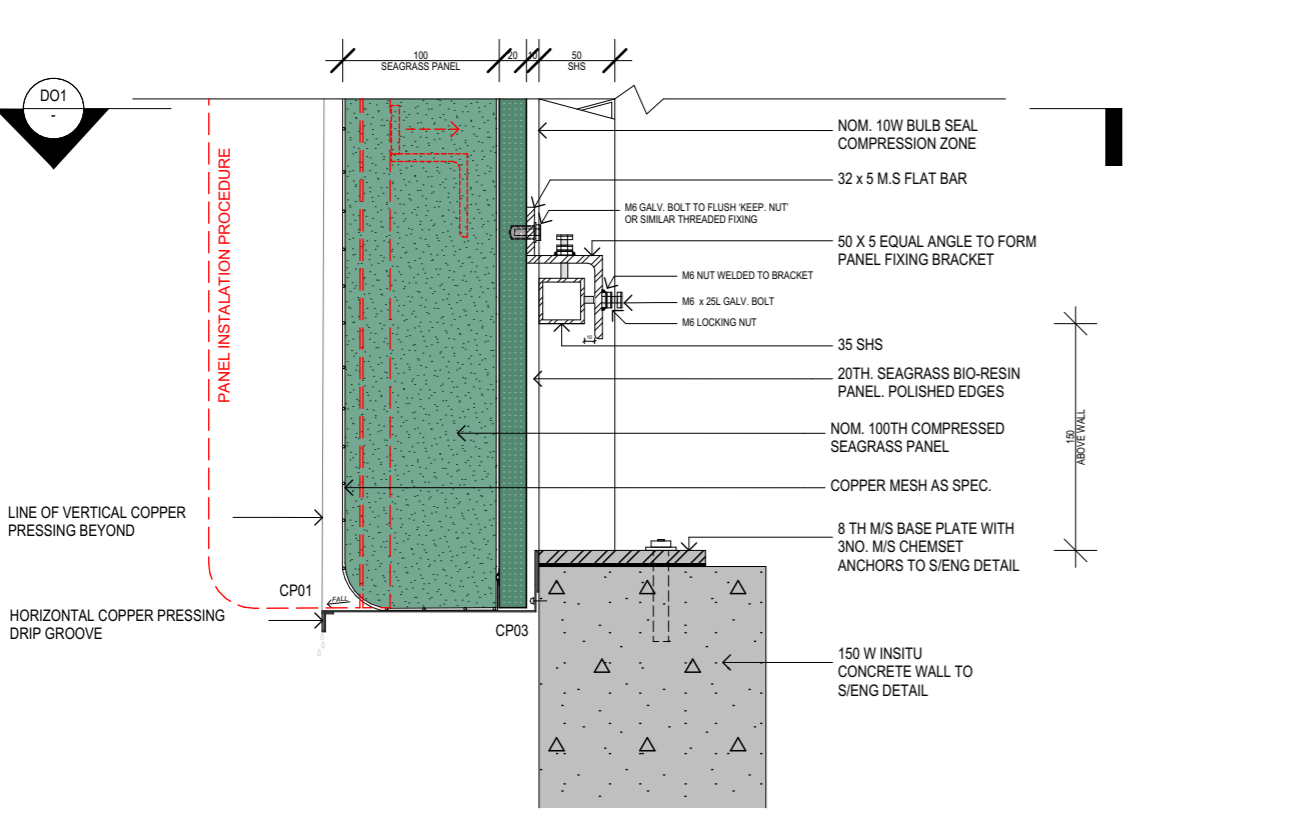
D03 PANEL CORNER JUNCTION PLAN
CD01 SCALE 1:5



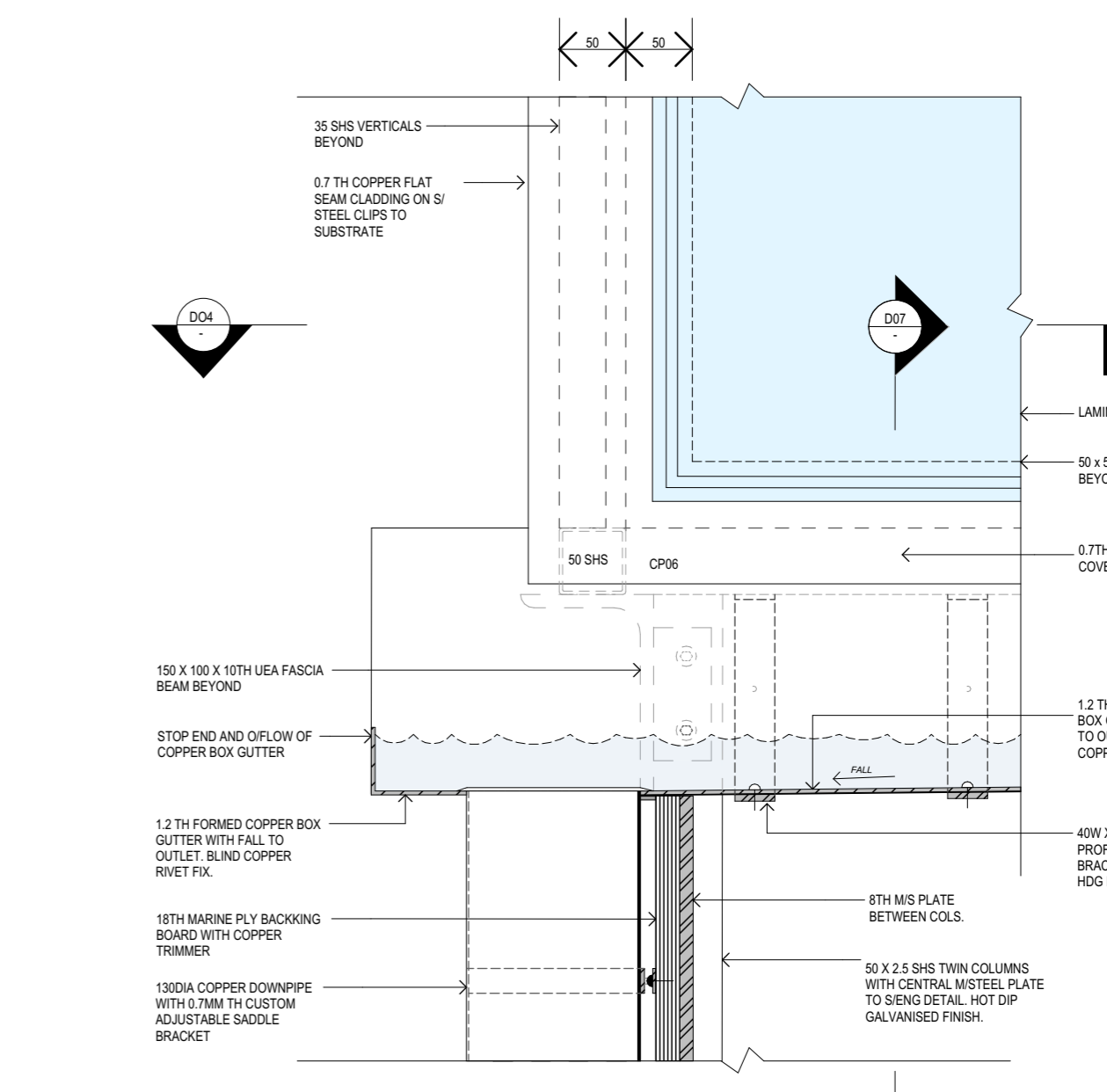
D05 SECTIONAL DETAIL
CD02 SCALE 1:5



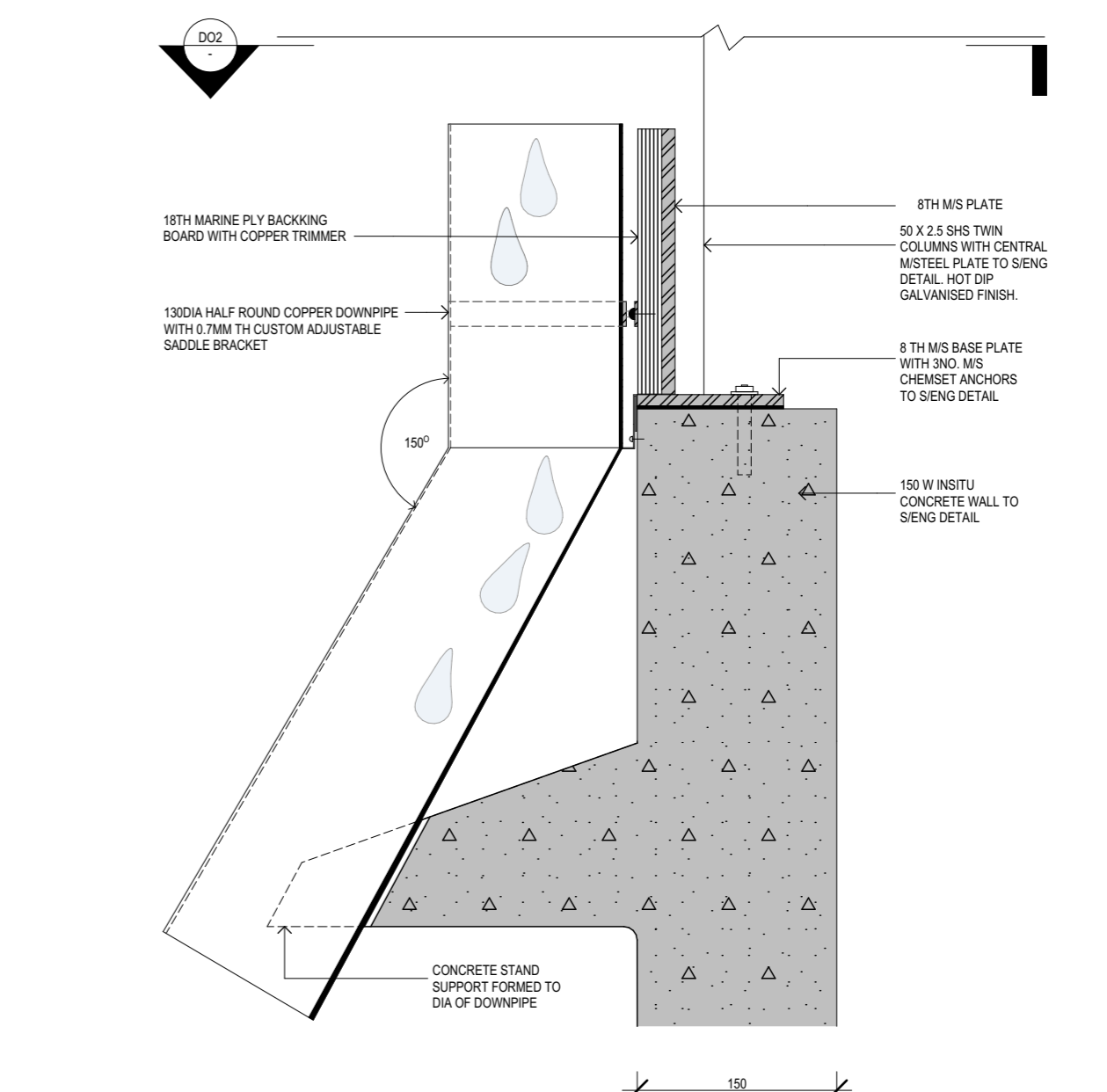
D10 PANEL FIXING BRACKET DETAIL
CD02 SCALE 1:2



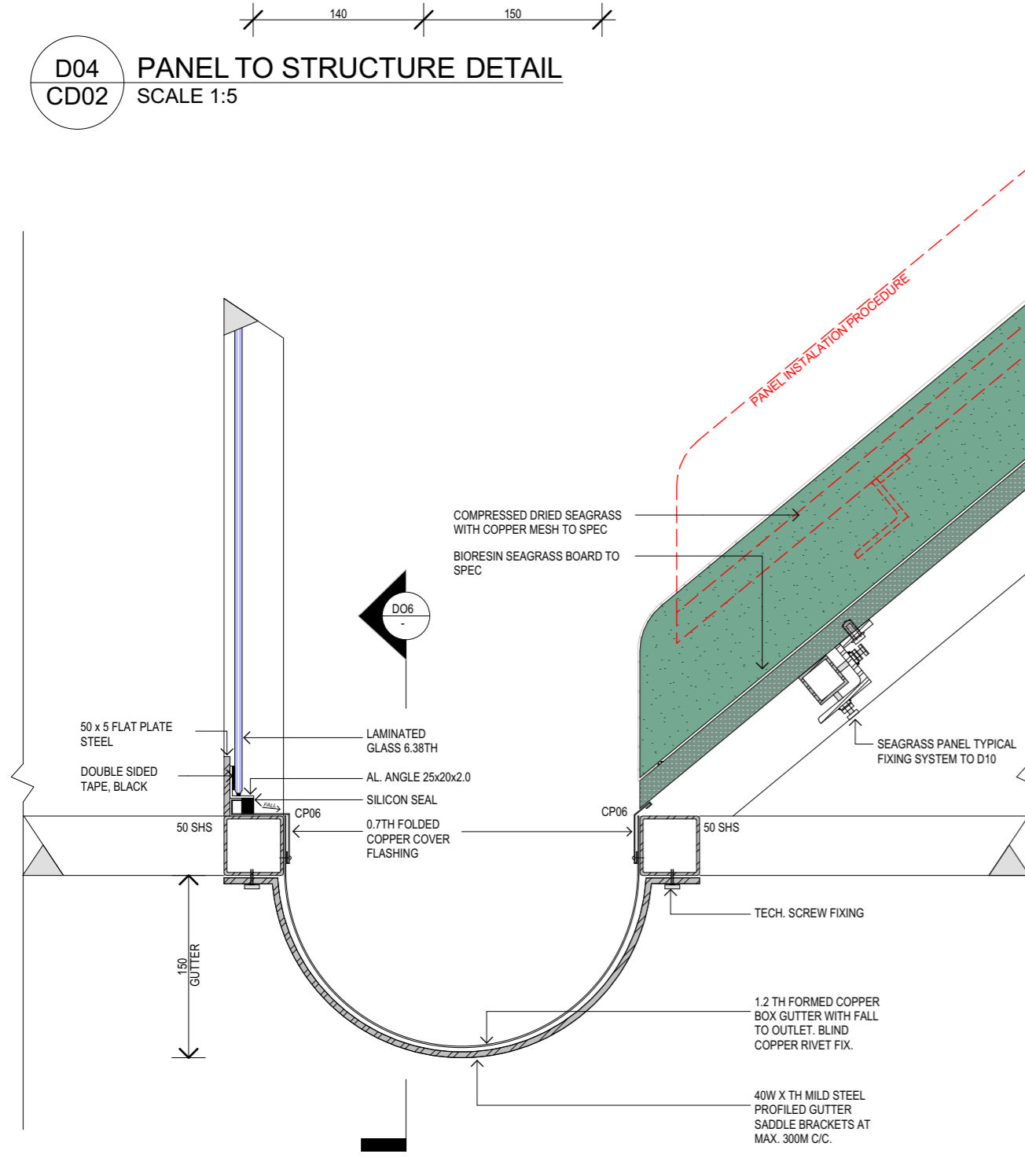
D04 PANEL TO STRUCTURE DETAIL
CD02 SCALE 1:5



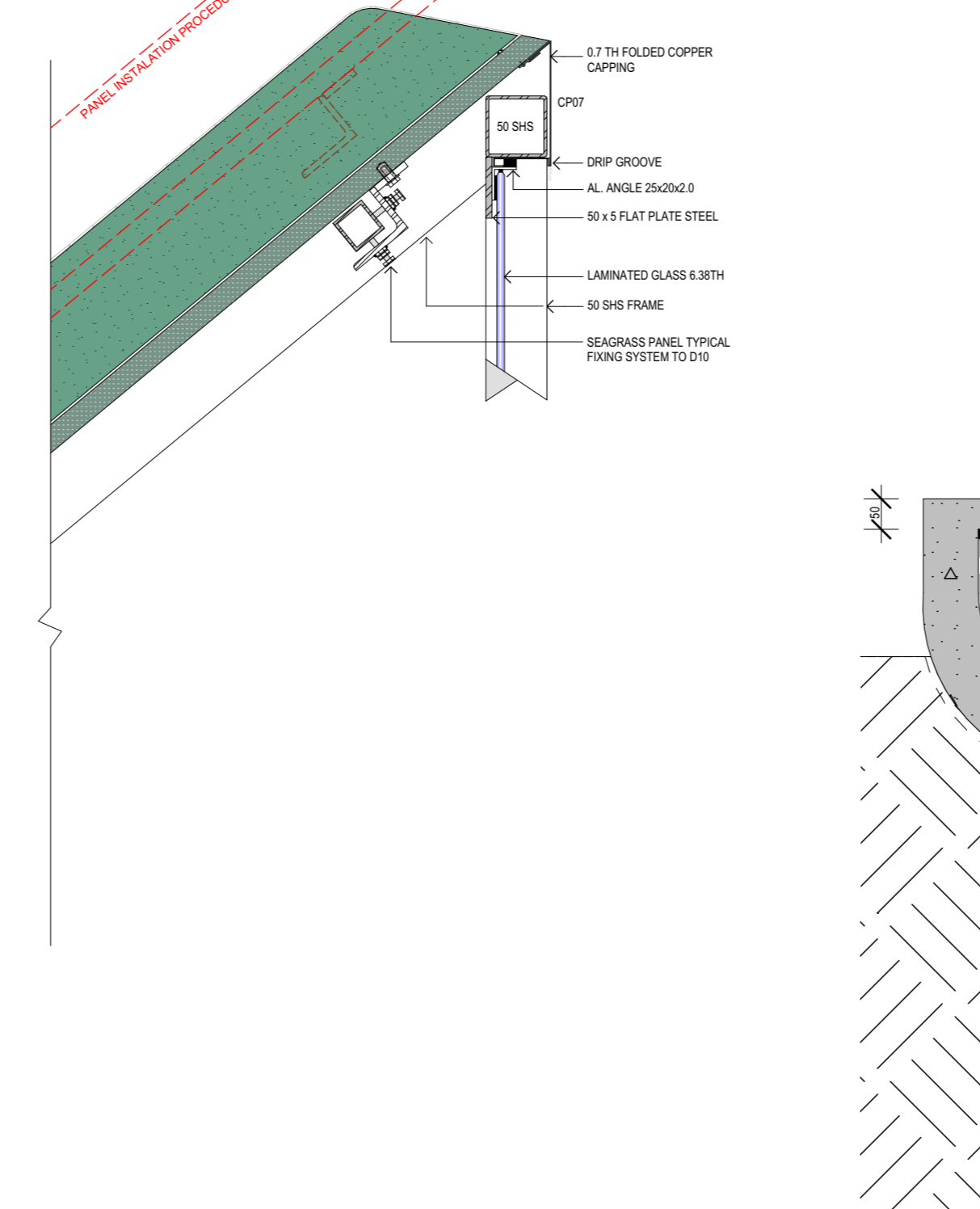
D06 GUTTER END DETAIL
CD02 SCALE 1:5



D08 CONC. WALL TO DOWNPIPE DETAIL
CD02 SCALE 1:5



D07 BOX GUTTER DETAIL
CD02 SCALE 1:5



D09 CONSTRUCTED WETLAND WALL DETAIL
CD02 SCALE 1:10

Identification removed

Reproduction of the whole or part of this document constitutes an infringement of copyright. The information, data and concepts contained in this document are confidential. The recipient of this document shall be prohibited from disclosing such information, data and concepts to any person without prior written consent of the copyright holder.

| | | | |
|---------------|-------------|------------------------------------|-----------|
| JOB | | SEAGRASS PANEL TENDER PACKAGE | |
| ADDRESS | | undisclosed | |
| DWG | | Seagrass Panel Details | |
| SCALE | DRAWN | CHECKED | COMMENCED |
| as shown | LE | SB | July 2023 |
| DATE PRINTED: | FILE NAME: | | |
| 28/09/2023 | Kayak Store | | |
| date: | no. | description | by |
| 28/09/23 | B | ISSUED FOR NOMINATED SUBCONTRACTOR | LE |
| | A | ISSUED FOR TENDER PURPOSE | LE |
| REVISIONS | | | |

CD03
REV.B