

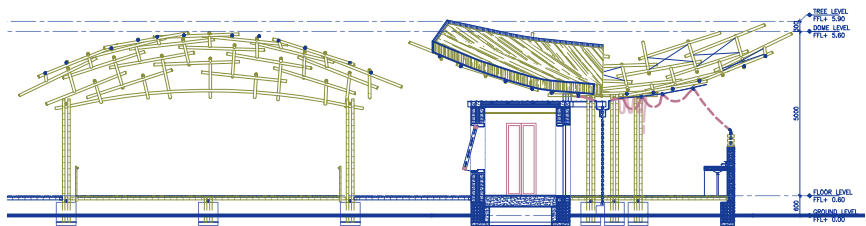
DIGITAL RUSTICS

A regenerative hybrid between humans, robots, and bamboos

This project positions itself in a network of new collaborations and relationships among humans, tools, and materials, thus facilitating a collective connection among the facility users with the rural NSW field and nature.

As an alternative to timber products, bamboo outperforms in terms of sustainability and carbon offsets. The building material is easily sourced and recycled for a continued and controlled harvest every 3-5 years, with availability on site, and a proposal to create a bamboo forest to supply building materials.

This project proposes a mode of accommodation capable of growth and adaptation, with the active involvement and empowerment of users, in a collaborative network among humans, between humans and tools, and between humans and nature. By industrialising the fabrication process, we lowered the threshold of bamboo craft and construction. A regenerative commons of bamboo structure making could then be established by visiting users, as they partake in a range of activities involving bamboo parts as building elements, including harvest, sawing, milling, and assembly.



CONCAVE AND CONVEX BAMBOO CANOPIES



RECIPROCAL GRID

